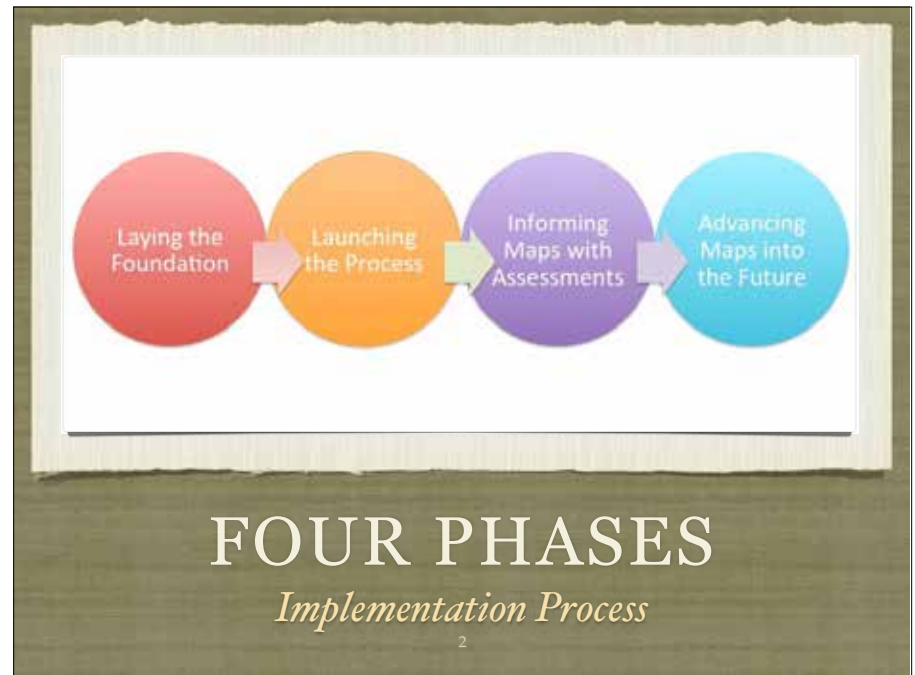


BATCH- Curriculum Basics



STANDARDS- BASICS

- They do not tell you WHAT to TEACH, WHEN to TEACH, HOW to TEACH
- They are proficiency targets not curriculum.
- Standards do not suggest best practice.
- The standards potentially can raise practice.
- Designed for local decision making



3



Turn to one or two colleagues

- ❖ Which standards sets are proving most powerful in affecting student learning?
- ❖ Which standards lead modernization of your curriculum?
- ❖ **6 minutes**



CHERRY PICKING

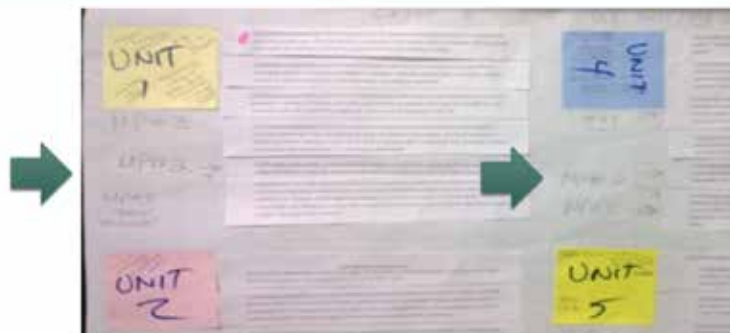
5



BUNDLING STANDARDS

6

STEP 5: ALIGN MPS OR CLIS TO POTENTIAL UNITS



Turn to one or two colleagues

- ❖ To what extent have your faculty members unpacked and thoughtfully aligned bundled standards to your curriculum vertically and across grade levels?
- ❖ *Ten minutes*



CURRICULUM

Latin: *A path to run in small steps*

WHAT IS CURRICULUM MAPPING?

- Calendar-based curriculum mapping is a procedure for collecting and maintaining a data base of the operational curriculum in a school and/or district.
- It provides the basis for authentic examination of the data base.



10

MAPPING IS A COIN WITH TWO SIDES

- One side is the documentation –the maps themselves
- One side is the review process – examining and revising map cumulatively between teachers



11

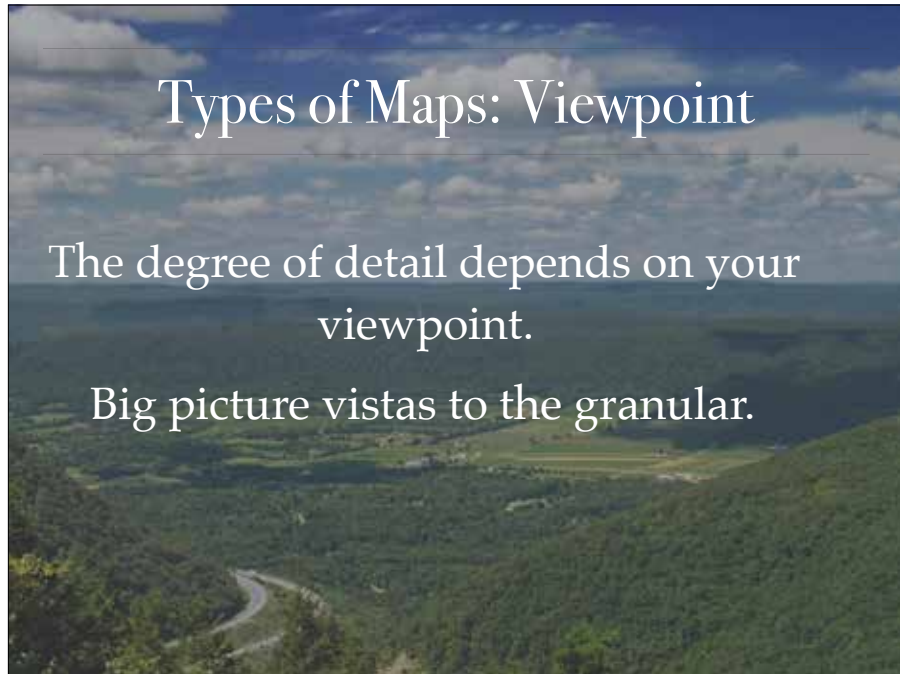


The days of the binder are over replaced by the Clearinghouse

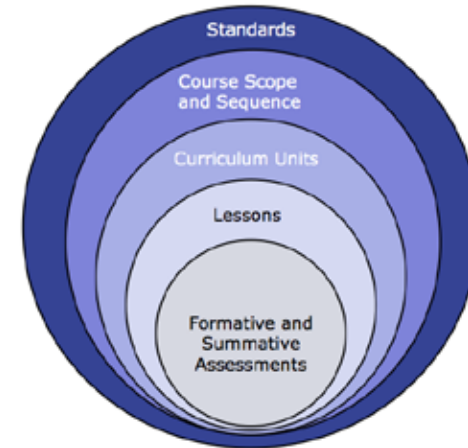
Types of Maps: Viewpoint

The degree of detail depends on your viewpoint.

Big picture vistas to the granular.



Curriculum Design Hierarchy

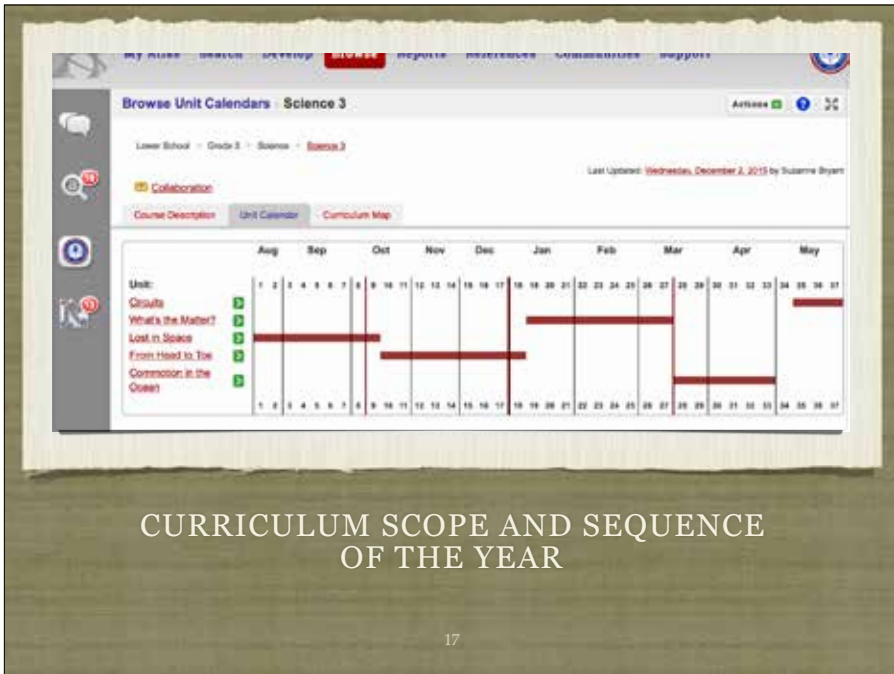


VIEW:
K-12
Scope and Sequence
VERTICAL

Designing **CONTEMPORARY**
curriculum that motivates and engages
versus “coverage”

PLEASE PULL UP YOUR
UNIT TEMPLATE





17


Unit Level

- two to eight weeks
- within a course or program
- part of a scope and sequence

Unit 1 -	
Big Ideas	Essential Questions
Content	Skills
Vocabulary	Assessments
Duration	Resources
Lessons and Activities	Standards

A common unit template

LESSON PLAN LEVEL



Manifest Destiny Case Study: Hollywood Interpretations

Hollywood's Interpretation versus Primary Source Documents:

- Compelling Question: How accurately do post-1900 movies and/or television shows portray the West?
- In this section, you will analyze how Hollywood has portrayed people who settled in the West.
- After reading four corresponding primary source documents compare with specific scenes from the clips.
- What were the motivations behind creating these movies/TV show? How might that impact the accuracy of the portrayals?
- How would you revise to make it more accurate?

Video Clips: Watch and analyze all four of the clips through the lens of our EQ before drafting your analysis:
[Little House on the Prairie](#)
[https://www.youtube.com/watch?v=20Pegp108U](#)
["Little House on the Prairie" Remastered Edition Trailer](#) YouTube, YouTube, 11 Mar. 2015, Web. 18 Mar. 2016.

Wild Wild West
[https://www.youtube.com/watch?v=08K79r-ark0](#)
["Wild Wild West \(1993\) Official Trailer - Will Smith, Kevin Costner Movie HD"](#) YouTube, YouTube, 13 Aug. 2013, Web. 18 Mar. 2016.

The Revenant
[https://www.youtube.com/watch?v=Lo6oCZ6K5AG](#)
["The Revenant | Official Trailer \(HD\) | 20th Century FOX."](#) YouTube, YouTube, 29 Sept. 2015, Web. 18 Mar. 2016.

The Lone Ranger (2013)
[https://www.youtube.com/watch?v=V0SPUPkxvG](#)
["The Lone Ranger: TRAILER \(2013\) - Johnny Depp Movie HD."](#) YouTube, YouTube, 12 Oct. 2012, Web. 18 Mar. 2016.

Section Requirements: Minimum of 1-2 pages double spaced
 Answer each question listed below.

20